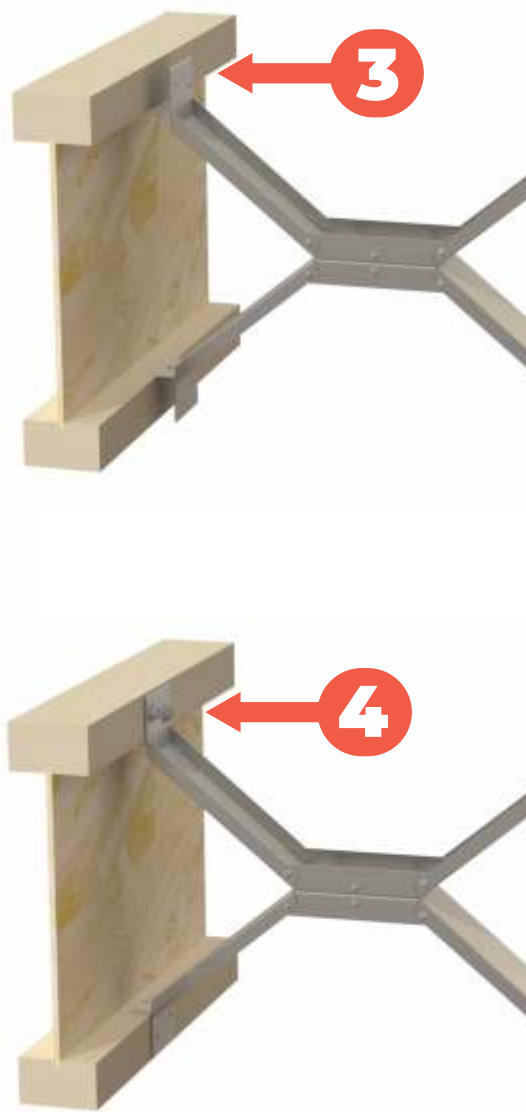
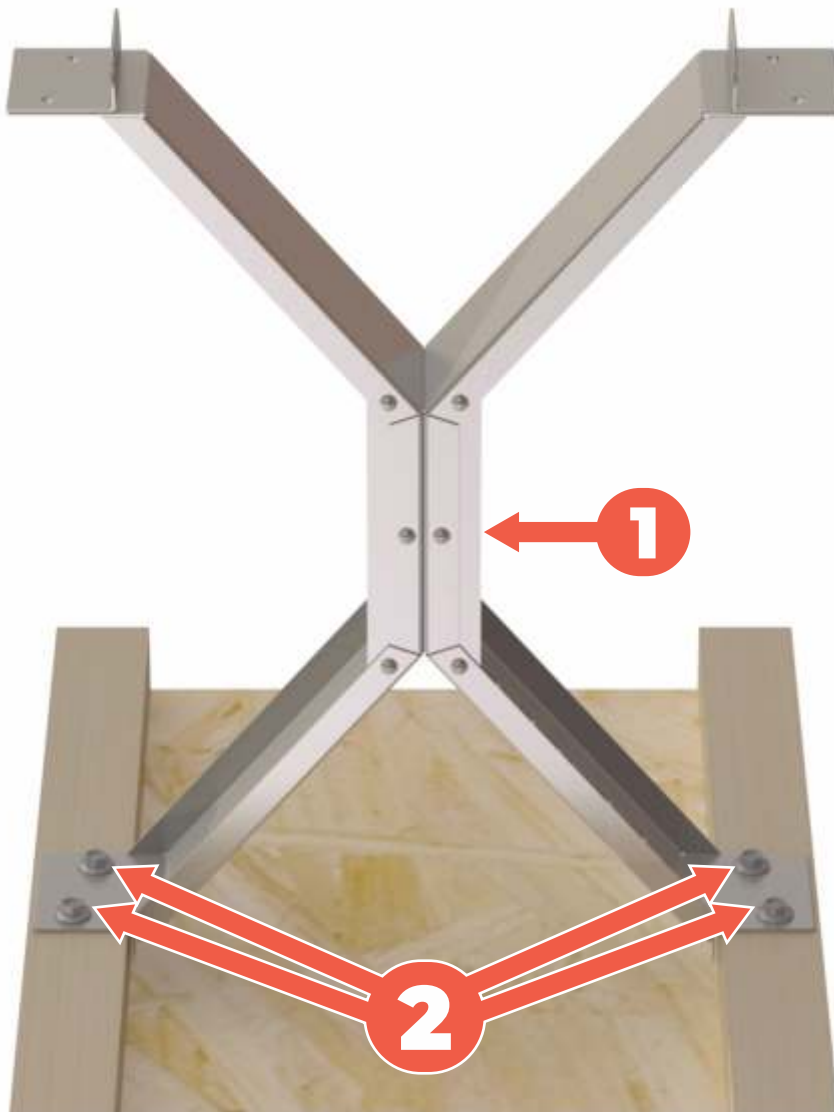
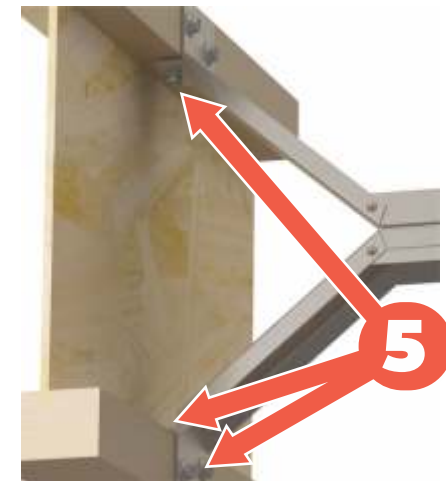


NEW CONSTRUCTION INSTALLATION & FIXING GUIDE



- 1** Fasten top brace to bottom brace with 2 screws.
- 2** Fasten one side of brace to I-Joist as shown - 3 screws per leg.
- 3** Roll the I-Joist and lock into position as shown.
- 4** Fasten top brace to I-Joist with 2 screws to secure in position.
- 5** Once sub floor has been installed, fasten the remainder of fasteners to I-Joist as shown.

NOTE: Floorlock fasteners are engineered to fasten steel to wood as well as steel to steel, which means one fastener is used for all connections. Screws are supplied in the box.



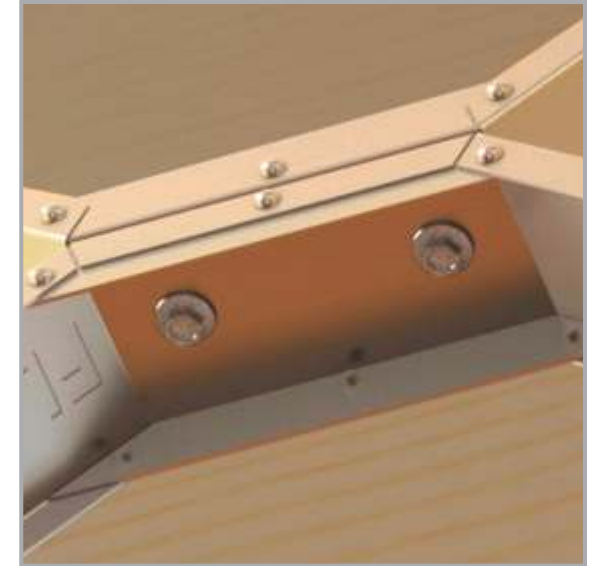
RETROFIT CONSTRUCTION INSTALLATION & FIXING GUIDE



- 1** Install top brace to I-Joist as shown (3 screws each leg).



- 2** Install bottom brace to I-joist as shown (3 screws each leg).



- 3** Fasten top brace to bottom brace as shown (2 screws).

