

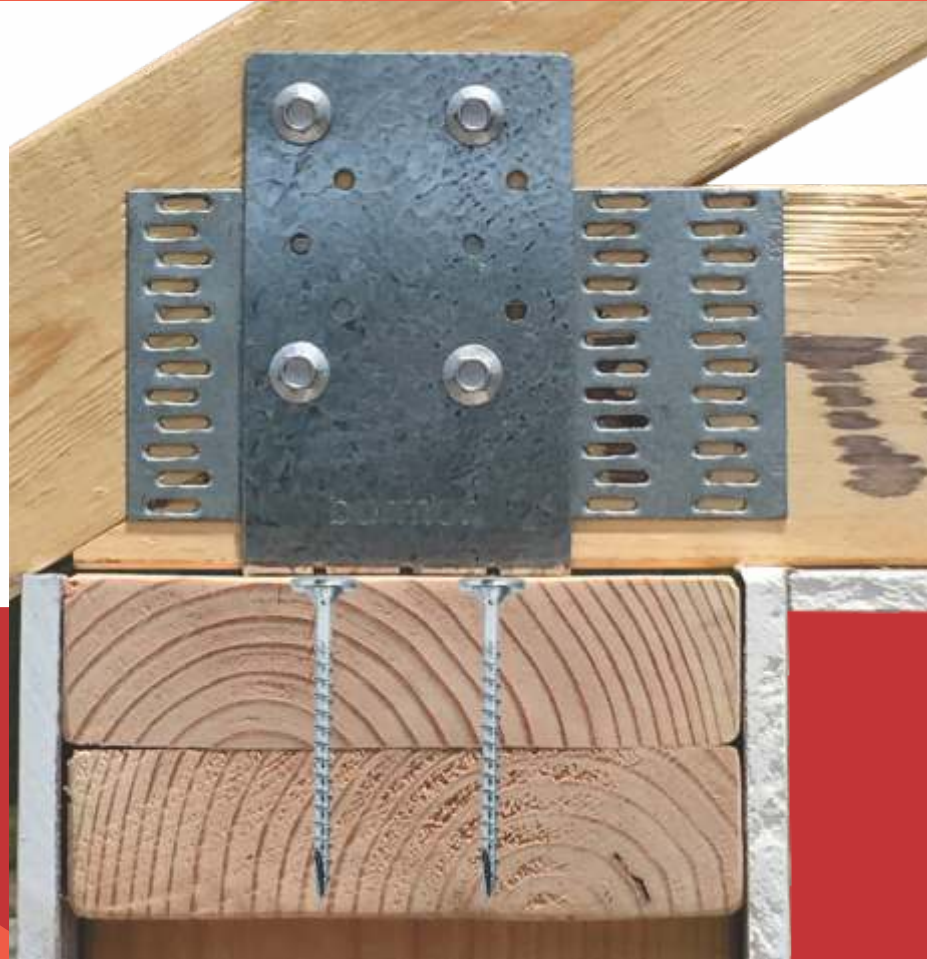
HURRICANE ANCHOR FOR DOUBLE TOP PLATE & SINGLE PLATE

"The best new product that has entered the building industry in the last 10 years"
- Nick Bruin, Multiple Master Builder Award Winner

Burmon combines its patented Hurricane Anchors with Impact Driver technology to deliver the most efficient and effective roof truss/rafter tie down system available, saving time and money.

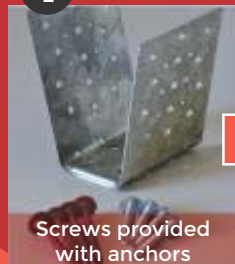
USING BURMON HURRICANE ANCHORS GIVES YOU THE ADVANTAGE

- ✓ FBC Code Compliant updated with latest changes to the 2018 International Building Code
- ✓ Designed and engineered to resist 96% of all global high wind events
- ✓ Anchors can be fixed to top plate whilst on the ground first, making it safer and faster when working at heights
- ✓ No toe nailing required
- ✓ No hand nailing required
- ✓ Stronger, faster connection
- ✓ Anchors hold trusses in position making bracing easier and safer



EASY TO INSTALL

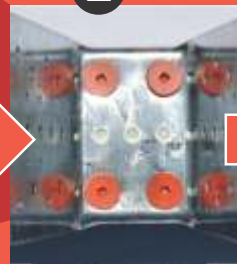
1 POSITION



Screws provided with anchors

Position BHB anchor at the set out point on the

2 FIX



Screw fix BHB anchor to top plate with Burmon screws

3 SECURE



Screw fix roof truss/rafter each side to BHB anchor using

HURRICANE ANCHOR FOR DOUBLE PLATE CONNECTION TO TRUSS/RAFTER

TECHNICAL INFORMATION

BURMON STOCK CODE **BHBDP**

SPECIFICATION

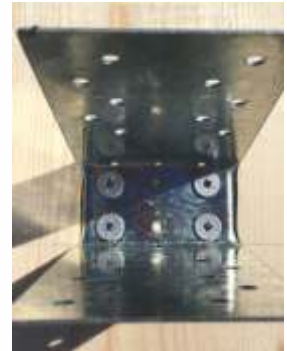
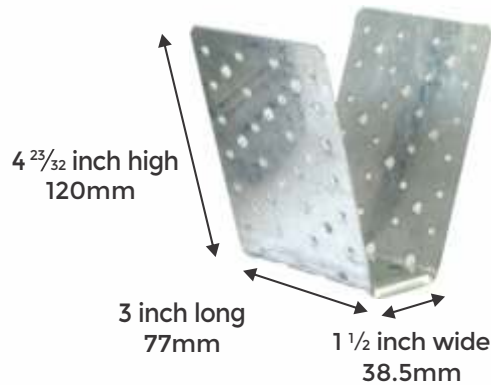
STEEL

Gauge
Corrosion Finish

18
G90

SCREWS

Burmon screws
comply to 1000 hours
Salt Spray Testing



EASY TO INSTALL

1

POSITION



Screws provided
with anchors

Position BHB anchor
at the set out point
on the top plate.

2

FIX



Screw fix BHB anchor to
top plate with Burmon
screws

3

SECURE



Screw fix roof
truss/rafter each side to
BHB anchor using
Burmon screws

LOAD TABLE

Please note: these are double plate numbers.

			FASTENER SCHEDULE				Installation type	DF/SP Allowable Load (lbs) ¹			S-P-F Allowable Load (lbs) ¹			Corrosion Finish
			Truss/Rafter		Double Plate									
Burmon Stock No.	Ref No.	Steel Gauge	Qty	Type Burmon Screws	Qty	Type Burmon Screws	Number of Anchors	Uplift 160%	Lateral F1 160%	Lateral F2 160%	Uplift 160%	Lateral F1 160%	Lateral F2 160%	Galvanising
BHBDP	BHB	18	6 3 each side	BHH39	4	BSD39	SINGLE ANCHOR	1771	1009	815	1381	787	635	G90
BHBDP	BHB	18	8 4 each side	BHH39	6	BSD39	SINGLE ANCHOR	2657	1514	1222	2072	1181	953	G90
							DOUBLE ANCHOR	5314	3028	2444	4144	2362	1906	

1. Allowable loads have been increased 60% for wind and seismic loads, no further increase shall be permitted.
2. Minimum quantity of fasteners to be installed. Product has additional screw holes not needed to meet published allowable load of product.
3. To view code report, please visit our website www.burmon.com/code-reports or visit the code evaluation agency's website.