

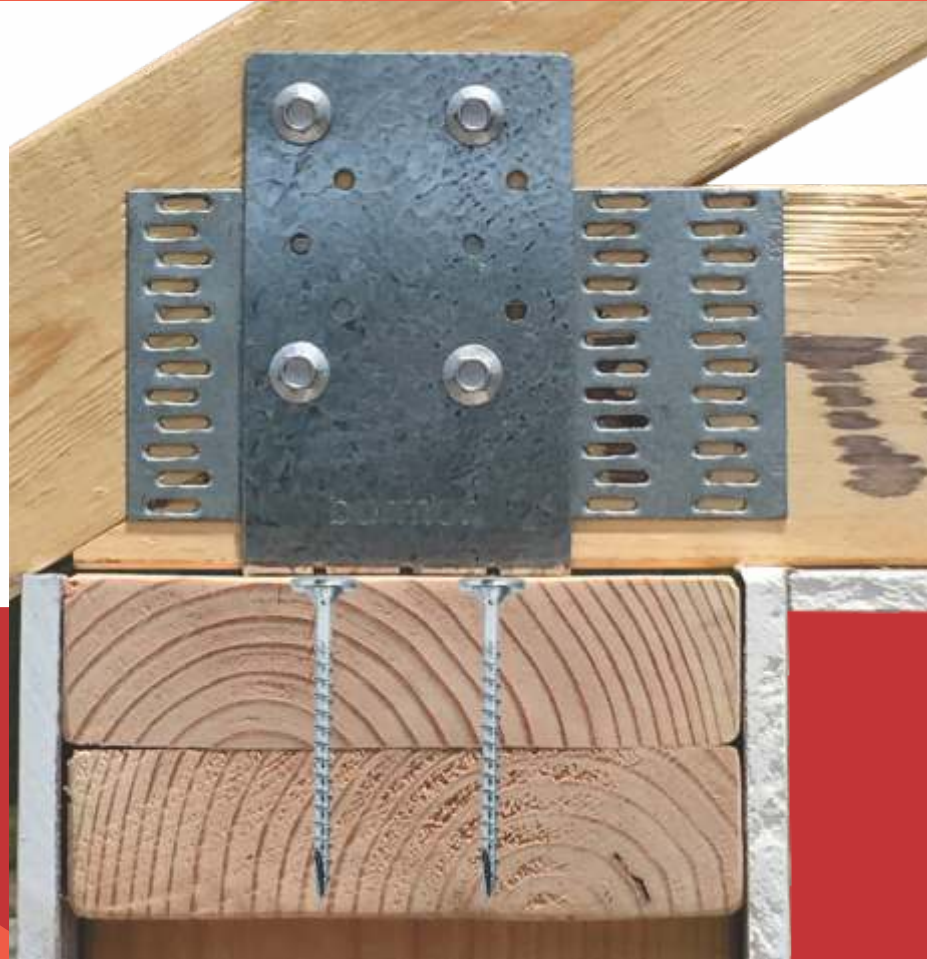
HURRICANE ANCHOR FOR DOUBLE TOP PLATE & SINGLE PLATE

"The best new product that has entered the building industry in the last 10 years"
- Nick Bruin, Multiple Master Builder Award Winner

Burmon combines its patented Hurricane Anchors with Impact Driver technology to deliver the most efficient and effective roof truss/rafter tie down system available, saving time and money.

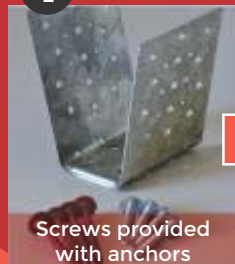
USING BURMON HURRICANE ANCHORS GIVES YOU THE ADVANTAGE

- ✓ FBC Code Compliant updated with latest changes to the 2018 International Building Code
- ✓ Designed and engineered to resist 96% of all global high wind events
- ✓ Anchors can be fixed to top plate whilst on the ground first, making it safer and faster when working at heights
- ✓ No toe nailing required
- ✓ No hand nailing required
- ✓ Stronger, faster connection
- ✓ Anchors hold trusses in position making bracing easier and safer



EASY TO INSTALL

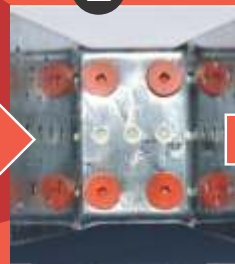
1 POSITION



Screws provided with anchors

Position BHB anchor at the set out point on the

2 FIX



Screw fix BHB anchor to top plate with Burmon screws

3 SECURE



Screw fix roof truss/rafter each side to BHB anchor using

HURRICANE ANCHOR FOR DOUBLE PLATE CONNECTION TO TRUSS/RAFTER

TECHNICAL INFORMATION

BURMON STOCK CODE **BHBDP**

SPECIFICATION

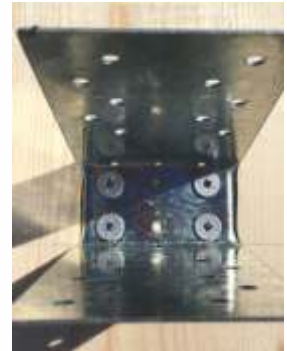
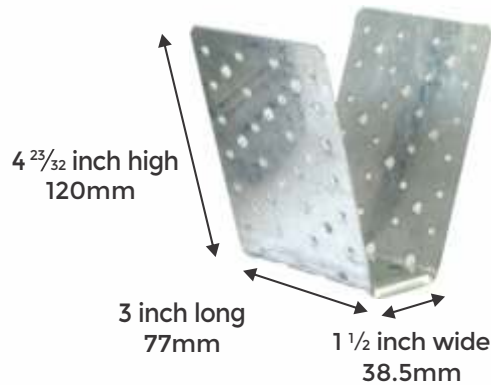
STEEL

Gauge
Corrosion Finish

18
G90

SCREWS

Burmon screws
comply to 1000 hours
Salt Spray Testing



EASY TO INSTALL

1

POSITION



Screws provided
with anchors

Position BHB anchor
at the set out point
on the top plate.

2

FIX



Screw fix BHB anchor to
top plate with Burmon
screws

3

SECURE



Screw fix roof
truss/rafter each side to
BHB anchor using
Burmon screws

LOAD TABLE

Please note: these are double plate numbers.

			FASTENER SCHEDULE				Installation type	Limit State Design DF/SP Factored Resistance (K _o = 1.15)			Limit State Design S-P-F Factored Resistance (K _o = 1.15)			Corrosion Finish
			Truss/Rafter		Double Plate									
Burmon Stock No.	Ref No.	Steel Gauge	Qty	Type Burmon Screws	Qty	Type Burmon Screws	SINGLE ANCHOR	Uplift 160%	Lateral F1 160%	Lateral F2 160%	Uplift 160%	Lateral F1 160%	Lateral F2 160%	Galvanising
BHBDP	BHB	18	6	BHH39	4	BSD39	k/N	9.4	5.3	4.3	6.6	3.7	3.03	G90
			3 each side					lbs	2112	1203	971	1484	846	
BHBDP	BHB	18	8	BHH39	6	BSD39	k/N	14.1	8.03	6.4	9.9	5.6	4.5	G90
			4 each side					lbs	3169	1806	1457	2225	1268	

- Allowable loads have been increased 60% for wind and seismic loads, no further increase shall be permitted.
- Minimum quantity of fasteners to be installed. Product has additional screw holes not needed to meet published allowable load of product.
- To view code report, please visit our website www.burmon.com/code-reports or visit the code evaluation agency's website.